

Village News

FEBRUARY 2011



LETHBRIDGE FAMILY
CIRCLE ASSOCIATION

Special points of interest:

- * Annandale Tours—Successful!
- * Q & A
- * Upcoming Agency Events

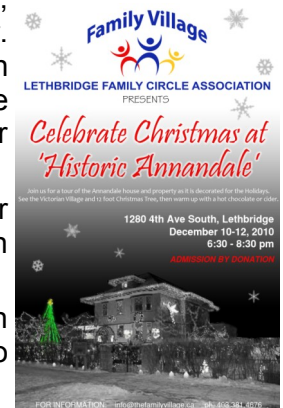
Annandale a Success!

During the 3 days of open houses at historic Annandale, hundreds of people were able to enjoy a Christmas tour. Thanks to the numerous volunteers who came out each evening, guests enjoyed a beautiful walk through the gardens, a tour of the house plus a nice hot chocolate or hot cider.

LFCA made over \$1600 through the 3 days by asking for donations at the door. These funds will be used to obtain additional funding from the Community Spirit Grant in 2012.

Our appreciation to the Bland family for once again welcoming our group (and the hordes of people who supported us) into their beautiful home.

Watch for this event again next year!



Inside this issue:

Retreat details	2
Commonwealth update	2
You Asked—We Answered	2
Partner Highlights	3
Upcoming Events	3
Meet our members	4



Retreat Coming—February 10-11, 2011—Paradise Canyon



LFCA board members, organizational stakeholder members and Commonwealth will be participating in a two-day retreat on February 10th and 11th. The retreat will allow the group to:

- Examine our partnership development;
- Update LFCA's Strategic Plan, - tell our story;
- Establish our core business;
- Develop an Action Plan and;
- Work on the Promotional Plan

Happenings with Commonwealth



We continue to work with Commonwealth. Various activities ongoing include:

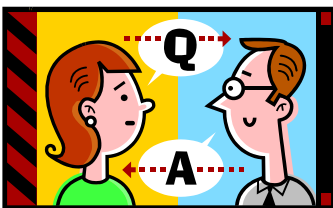
- Retreat February 10-11
- Developers in Lethbridge February 17-18
- Meetings with various government groups
- Preparing proposals for various government ministries
- Lethbridge Lottery—paving the way

Tara would like to thank the agencies in providing support documents and statistics when asked. Your continued support of the Joint Venture is appreciated.

You asked—We answered

Q: What is LFCA's relationship to Commonwealth and how does that affect fundraising and donations received by LFCA?

A: *LFCA and Commonwealth have a Joint Venture Agreement signed. The Joint Venture could be compared to LFCA hiring a General Contractor to help build the Family Village. The Joint Venture Agreement outlines what each group is responsible for and how long the agreement is in effect. LFCA's mission and vision of creating a co-location site does not change, but is enhanced by the addition of retail and housing spaces resulting from Commonwealth's involvement. Commonwealth is paid based on a percentage of the cost of building the Family Village. As a result, money raised either by LFCA alone or in partnership with Commonwealth doesn't get divided out between the two groups. All funds raised, granted and donated will go toward building the Family Village.*



Do you have a question you want answered?
Submit it to Tara and she will be sure to get it answered for you!

Partner Highlights

McMan Youth, Family and Community Services Association is a registered, not-for-profit organization that was established in 1975. Our mission is “To support and encourage individuals and families to achieve their full potential as members of their community”. In the South Alberta region, we are governed by a volunteer Board of Directors and offer programs related to foster and group care, supporting individuals and families impacted with Fetal Alcohol Spectrum Disorder (FASD), youth and adult homelessness, success coaching for youth, parent education and support and anti-bullying initiatives.

McMan turns 35 years old this year – and to celebrate this wonderful milestone, we are presenting: **Theoren Fleury – “Don’t Quit Before the Miracle!”** Theo’s message of triumph and encouragement is coming to Lethbridge, Saturday, February 26th, 2011 at Coast Lethbridge Hotel and Convention Centre. Banquet tickets are \$100 each with a tax-deductable receipt of \$60.00. All proceeds will go to support McMan’s FASD Lifespan Program. Tickets are available by calling McMan at 403-328-2488, ext 223 or at Bert & Macs Source for Sports. There will also be a Silent Auction at the event, including dinner for two with Theo in Calgary!



Clusters

- a geographically proximate group of interconnected companies... in a particular field, linked by commonalities and complementarities.

M.E. Porter (“Location, Competition and Economic Development: Local Clusters in a Global Economy”)

- generate specialized skills, new knowledge, innovative competition, opportunities for cooperation, tailored infrastructure, and often attract specialized support and other services and related businesses.

S. Rosenfeld (“Bringing Business Clusters into the Mainstream of Economic Development”)

Upcoming Agency Events:

See below for various events coming up. Contact the individual agency for further details.

Date	Agency to contact	Event and location
February 10-11 9:00am-5:00pm	LFCA	Retreat Paradise Canyon Golf Course
February 23 2:00-5:00pm	Boys & Girls Club	Pink Shirt Day Lethbridge Senior Citizens Organization
February 26 6:00pm	McMan	Theoren Fleury—Don’t Quit Before the Miracle! Coast Hotel By advance ticket purchase only
March 2 11:45am-1:30pm	SAIPA	25th Anniversary Celebration Canadian Legion
March 4	Volunteer Lethbridge	Deadline for Leaders of Tomorrow nominations
March 19	LFS—Immigrant Services	2011 Immigrant Achievement Awards Coast Hotel
April 9	City of Lethbridge	Project Homeless Connect Lethbridge Senior Citizens Organization
April 10-16	Volunteer Lethbridge	National Volunteer Week Various activities throughout the week—contact for details.
April 14	Volunteer Lethbridge	Grand Opening of new location

If you have an upcoming event, let Tara know and she will put it in the next quarterly newsletter.



LETHBRIDGE FAMILY CIRCLE ASSOCIATION

Christmas has come and gone—the snow and cold is upon us!
We hope you are able to take this time to meet up with old friends and family.
Community and family are extremely important, especially right after the holidays so
make sure to stay in touch!



TARA YAGOS
Project coordinator
403-381-4676
403-892-0616
403-320-8878 (fax)
info@thefamilyvillage.ca



Meet our members

LFCA would like to introduce our members:

Agency members:

Alberta Health Services
Alvin Reinhard Fritz Architect Inc.
Behavioral Solutions Inc.
Body Talk
Boys & Girls Club of Lethbridge & District
Brain Trauma Support Society
Breathtaking Births Professional Doula
Canadian Mental Health Association
Canadian Paraplegic Association
Community Conflict Resolution Services
Family Ties Association
Greystoke Homes & Support Services Inc
Interfaith Food Bank
It's a BLAST
Kidney Foundation of Canada
Lethbridge Community Network

Lethbridge Family Services
Lethbridge Food Bank
Lethbridge Schizophrenia Society
Lethbridge Senior Citizen Organization
Lethbridge Sport Council
McMan Youth, Family and Community Services Association
Office of the Public Guardian
Opokaa'sin Early Intervention Society
PEAK
Rhapsody Music
Safety City Society of Lethbridge and Area
SALAS Ltd.
Southern Alberta Community Living Association
Southern Alberta Individualized Planning Association
Special Olympics
Volunteer Lethbridge
Woods Homes

Individual members:

Diane Bland
Tennille Entz
Stephanie Fisher-Dortman
Jordan Head

Susan Jensen
Lyndsey Robinson
Corinne Steele

We look forward to working toward the opening of our Family Village!
Do you know of someone who is interested in becoming a member?
Have them contact Tara at info@thefamilyvillage.ca for membership information.